

ScissorLoc™ I

FLOATING SYSTEMS

ScissorLoc I is a dimensionally stable system with excellent natural ventilation capabilities due to its intersecting solid wood subfloor component design. ScissorLoc I is designed to withstand heavy loads while still providing a resilient and controlled playing surface.

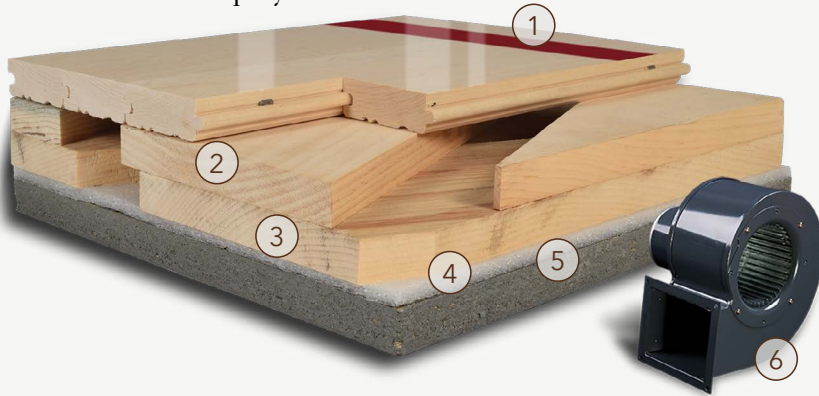
Aacer's PowerVent™ airflow system is a popular accompaniment to this system. It maintains balanced humidity above and below the floor as well as detects moisture to initiate mechanical airflow drying.



INFINITY
Wood Floors

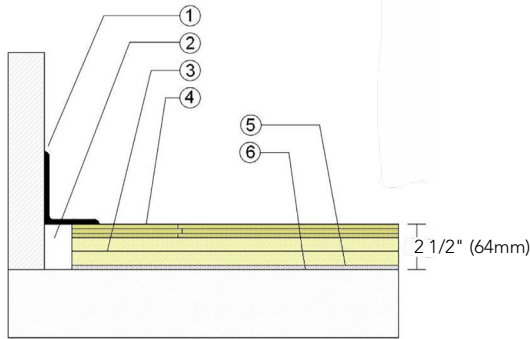


ScissorLoc™ I provides an intersecting subfloor design for premium airflow and uniform play.



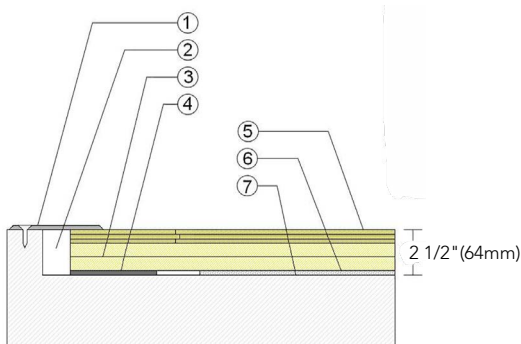
- | | |
|-----------------------------------|--------------------------------|
| 1. Infinity MFMA Maple | 4. 1/4" (6mm) Performance Foam |
| 2. Kiln-dried Pine Upper Subfloor | 5. Vapor Retarder |
| 3. Kiln-dried Pine Lower Subfloor | 6. PowerVent Airflow System |

WALL BASE



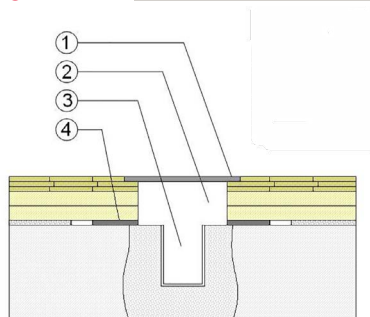
- 3" x 4" (76mm x 101mm) Vent Cove Base
- 1 1/2" (38mm) Min. Expansion Space
- Nominal 1" x 6" (19mm x 140mm) Pine Subfloor Layers Spaced 2" (51mm) Apart
- 25/32" (20mm) MFMA Maple Flooring
- 1/4" (6mm) Resilient Foam Blanket
- Vapor Retarder

THRESHOLD



- 1/4" (6mm) Aluminum Threshold
- 1 1/2" (38mm) Min. Expansion Space
- Nominal 1" x 6" (19mm x 140mm) Pine Subfloor Layers Spaced 2" (51mm) Apart
- Solid Blocking at Doorway
- 25/32" (20mm) MFMA Maple Flooring
- 1/4" (6mm) Resilient Foam Blanket
- Vapor Retarder

EQUIPMENT



- Floor Plate
- 1 1/2" (38mm) Min. Expansion Space at all Inserts & Electrical Penetrations
- Concrete Floor Penetration
- Solid Blocking at Insert

Certified



Green Status and LEED Contributors



- FSC® Certified Maple - MR
- FSC® Certified Subfloor Components - MRC7
- Environmental Quality - EQ
- Regional Materials - MR

Resilience

1/4" (6mm) Performance Foam
*Other pad options available.

Slab Depression

- 25/32" (20mm) flooring - 2 1/2" (64mm)

Optional ScissorLoc™ Systems

ScissorLoc™ II
ScissorLoc™ III
ScissorLoc™ LP

Optional Protection System

PowerVent™ Airflow System

Subfloor Construction

Intersecting Kiln-dried Solid Pine

System Type

Floating

Testing Laboratory Partners



U.S. Patent #

#5,299,401

It is the policy of Infinity Wood Floors to continuously improve its line of products. Therefore, Infinity Wood Floors reserves the right to change, modify or discontinue systems, specifications and accessories of all products at any time without notice or obligation to purchaser.